



BRITISH
PROPERTY
AWARDS

2018
★ ★ ★ ★ ★

GOLD WINNER

ESTATE AGENT
IN STAMFORD

nest
ESTATES



Elton Road, Wansford

Peterborough, PE8 6JD

£260,000

SUMMARY

- No Chain
- Two Double Bedroom Cottage
- Living Room & Dining Space
- Kitchen & Utility Room
- Shower Room
- Garden & Store Room
- Idyllic Village Location





*** NO CHAIN ***

Offered for sale is the quaint two double bedroom cottage, set in the idyllic village of Wansford and its amenities.

The cottage comprises; Front Garden, Living Room & Dining Space, Kitchen, Shower Room, Two Double Bedrooms, Utility Room, Separate Store and Garden with decked seating area.

The village offers great amenities with two public houses, a hotel and village shop close by.

Measurements:

Living room 3.73m x 4.57m (12'2" x 15'0")

Kitchen 2.36m x 4.57m (7'8" x 15'0")

Rear hall 0.89m x 1.22m (2'11" x 4'0")

Shower room 1.65m x 1.88m (5'5" x 6'2")

Landing 0.76m x 0.97m (2'6" x 3'2")

Bedroom one 3.73m x 4.57m (12'2" x 15'0")

Bedroom two 2.44m x 3.66m (8'0" x 12'0")

Outbuilding 2.24m x 2.82m (7'4" x 9'4")

Brick Built Store



Tenure: **Freehold**

EPC Rating: **E**

Council Tax Band: **B**

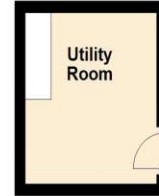
Local Authority: **Peterborough City Council**

Services: **Electric Heating**

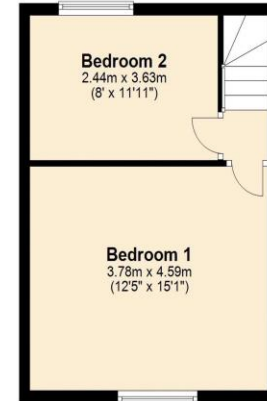
DISCLAIMER

Money Laundering Regulation: People who intend to purchase will be asked to show us documents to prove their identity. This will allow us to agree the sale and move forward with your purchase as quickly as possible. 2. We do our best to make sure our sales particulars are as accurate and reliable as we can. However, they are a general guide to the property and if something is particularly important to you, we will be happy to check information for you. As regards measurements, the approximate room sizes are intended as a general guide. You must verify dimensions of rooms yourself before ordering any carpets or furniture. 3. As regards services, we have not tested the services or any equipment including appliances in this property. We advise prospective buyers to carry out their own survey, service report before making their final offer to purchase. 4. This sales information has been issued in good faith. However, it does not constitute representation of fact or form part of any offer or contract. The information referred to in these particulars should be independently verified by any prospective buyer or tenant. Neither Nest Estates nor any of its employees has the authority to make or give any representation or warranty whatever in relation to this property.

Ground Floor
Approx. 45.3 sq. metres (487.9 sq. feet)



First Floor
Approx. 29.0 sq. metres (312.1 sq. feet)



Total area: approx. 74.3 sq. metres (800.0 sq. feet)

nest
ESTATES

8-9 Red Lion Street Stamford Lincolnshire PE9 1PA

01780 238110

info@nestestates.co.uk

www.nestestates.co.uk